

Aquatic Macroinvertebrate Sorting and Identification Guide

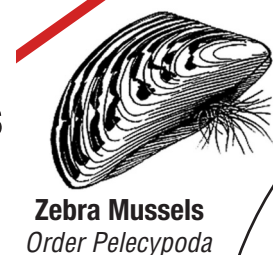
Images courtesy of Troutnut.com, University of Wisconsin Extension – ERC Natural Resources Education, University of South Florida College of Education – Florida Center for Instructional Technology, and Magnus Manske.

START HERE

Please note that the illustrations are for reference only and are not true to scale.

Does it have a SHELL?

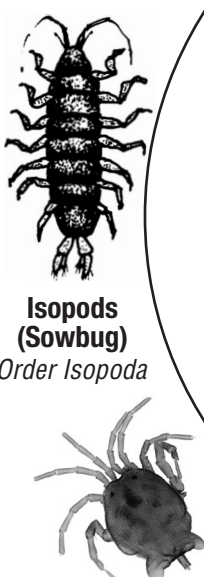
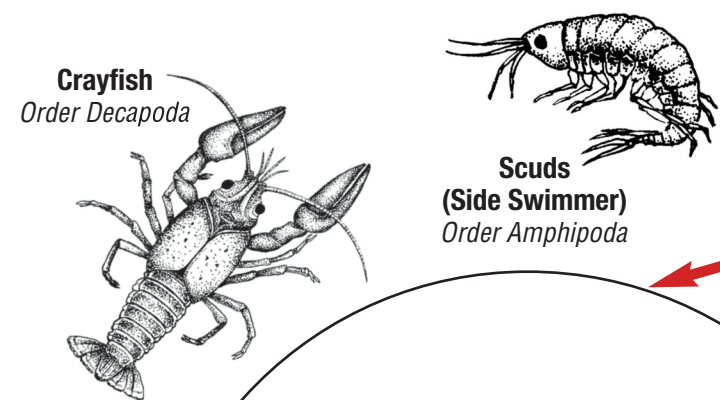
No Shell And No Legs



No Shell It Has Legs

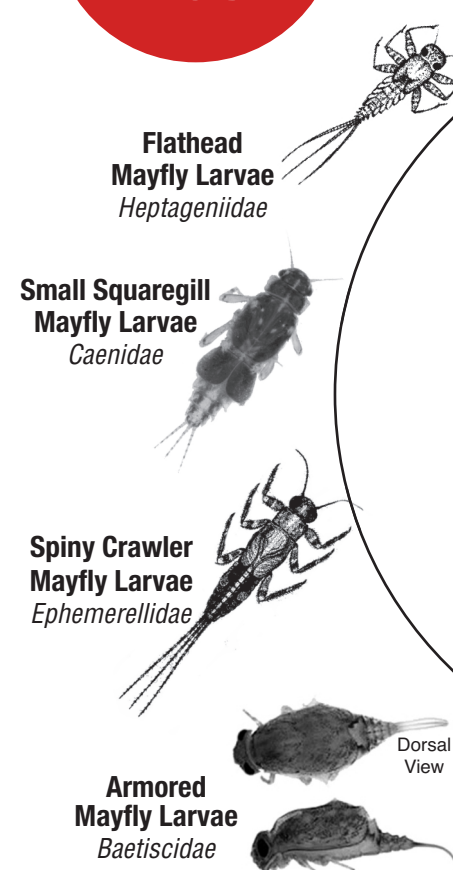
How many LEGS?

Many Legs



Scuds, Isopods Crayfish, and Mites

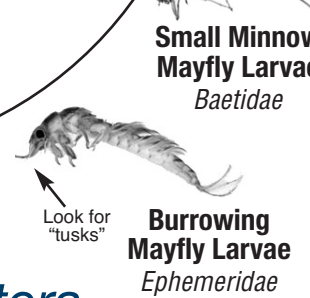
3 Pairs of Legs



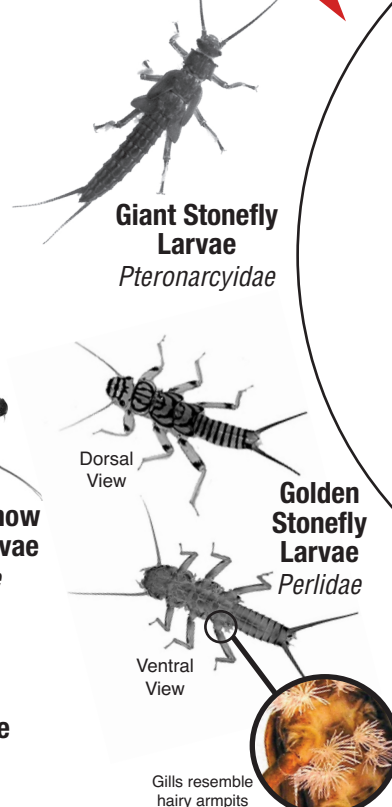
Mayflies
Order Ephemeroptera

How many TAILS?

3 Tails



2 Tails

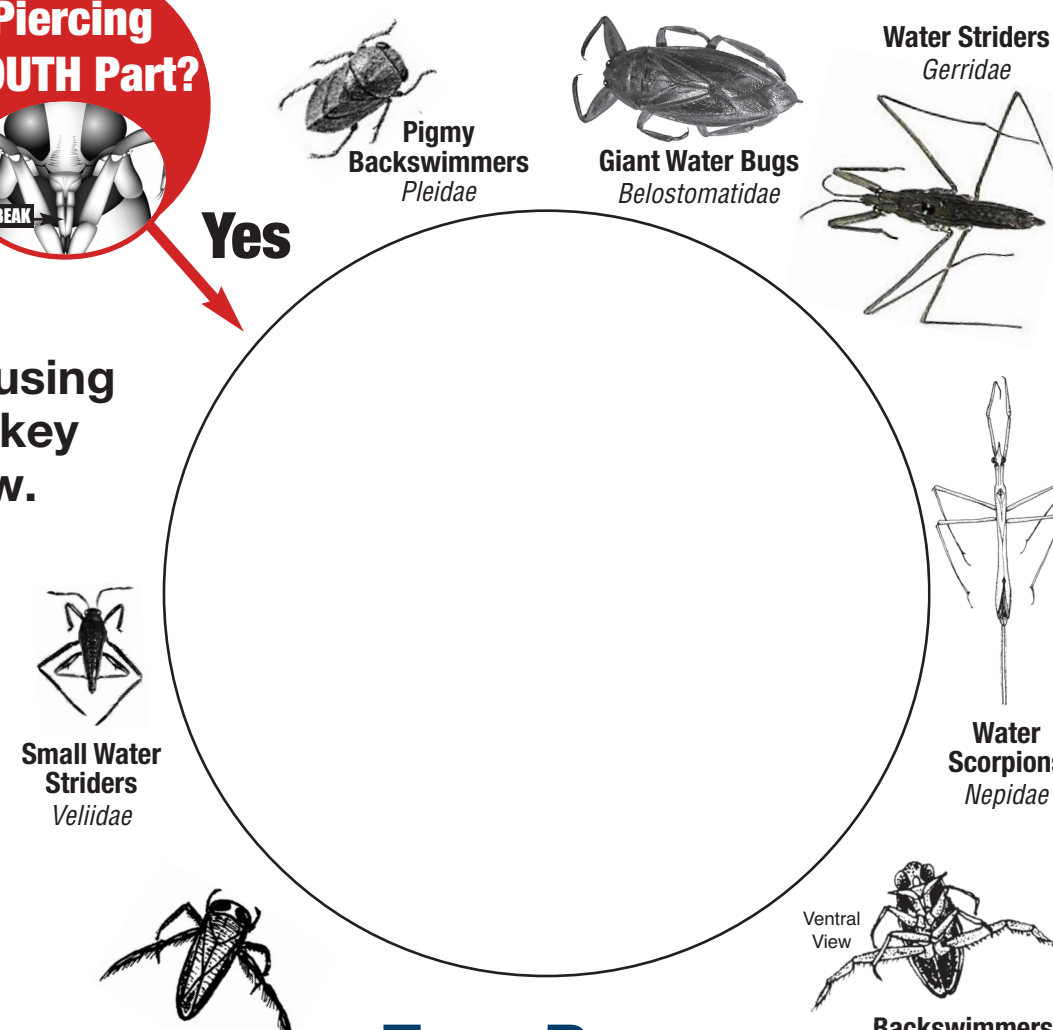


Stoneflies
Order Plecoptera

1 or No Tail

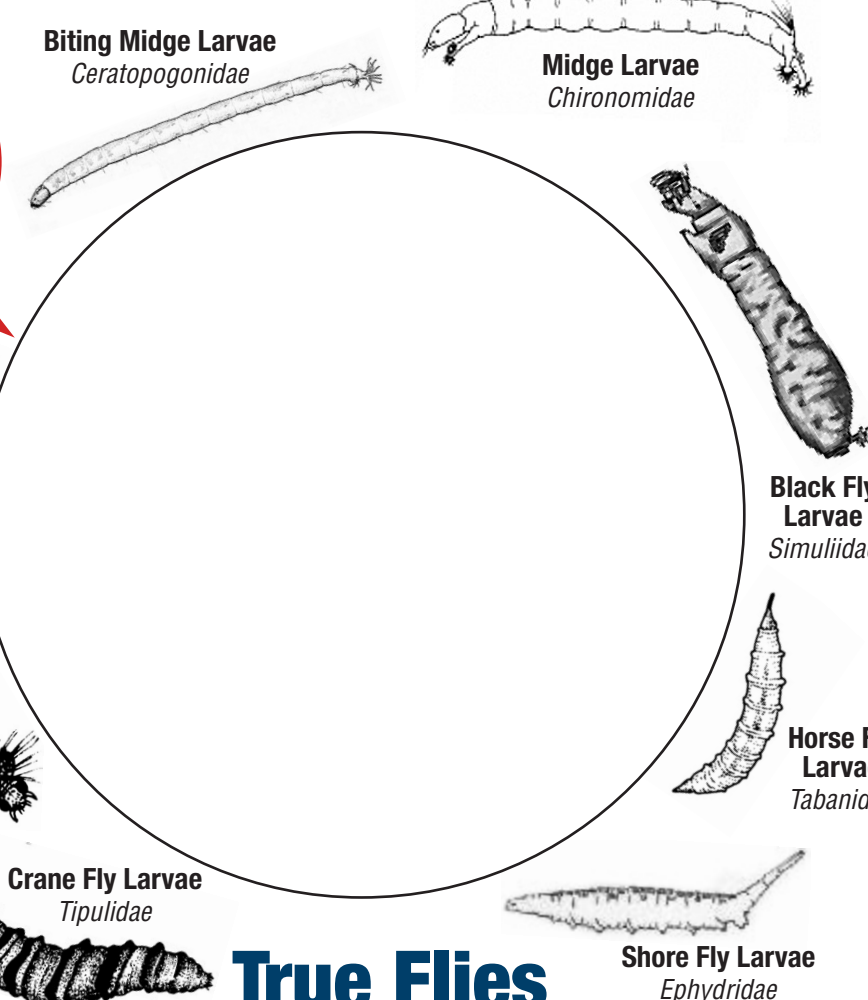
Piercing MOUTH Part?

Yes



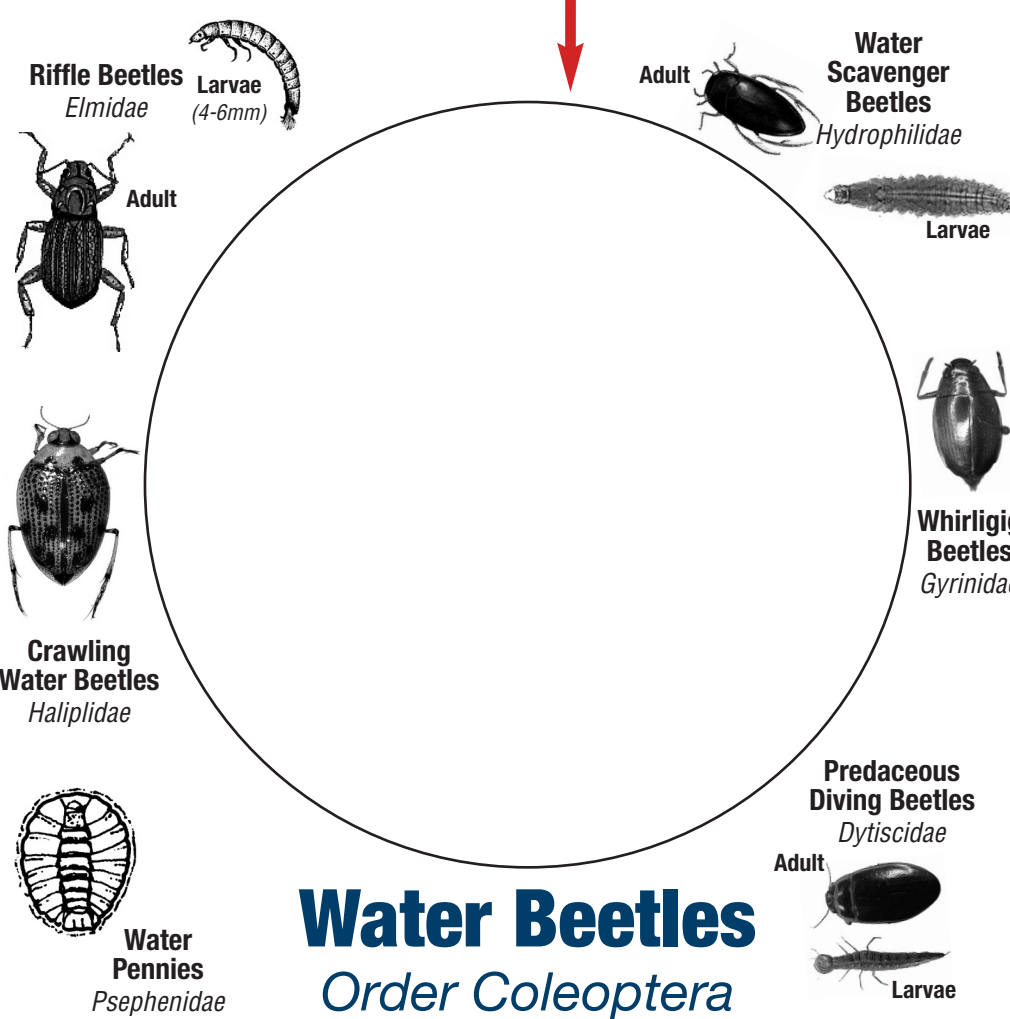
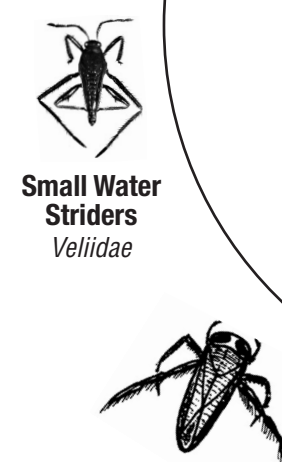
True Bugs
Order Hemiptera

Worm-like Invertebrate or True Fly?
Use images to identify.

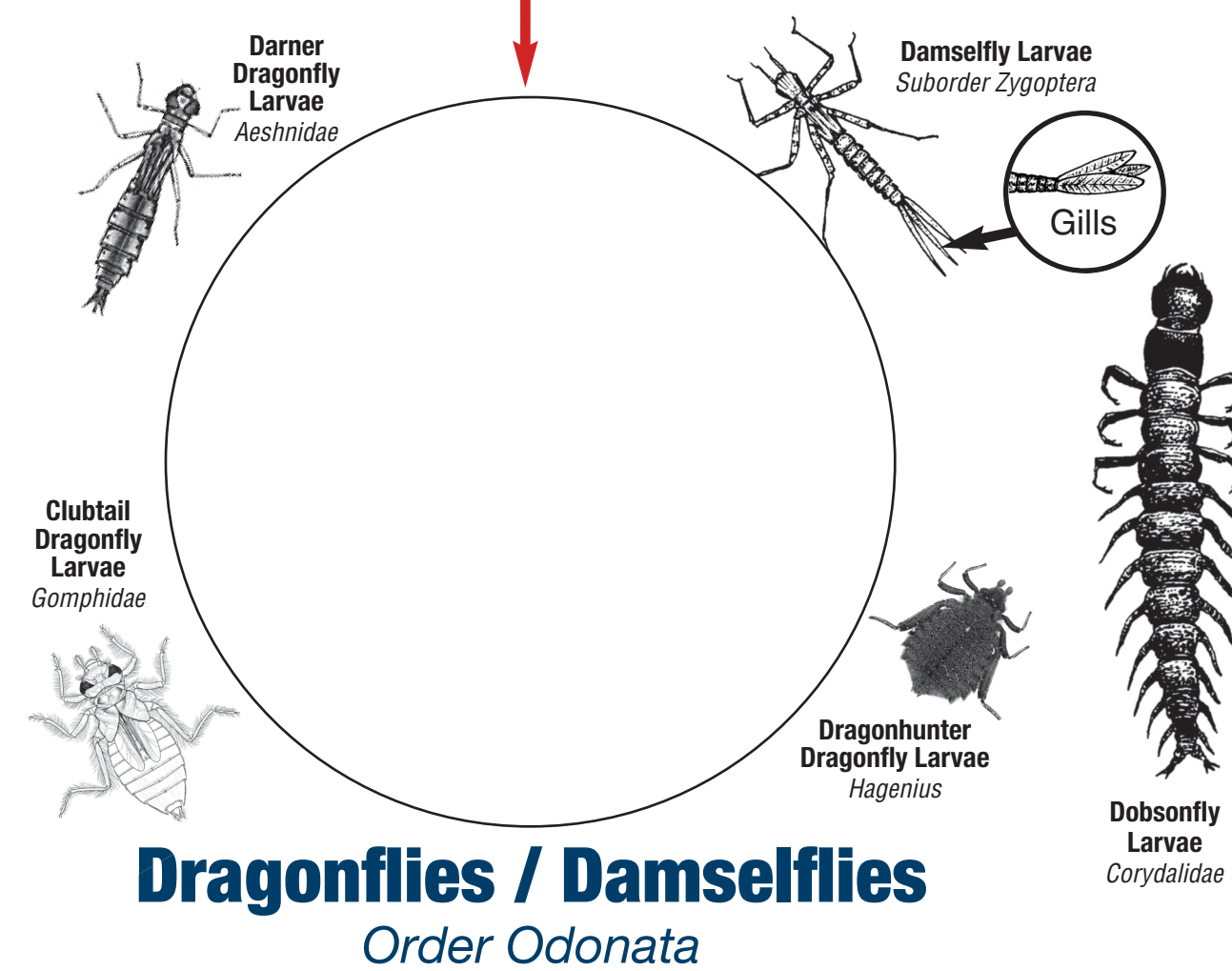


True Flies
Order Diptera

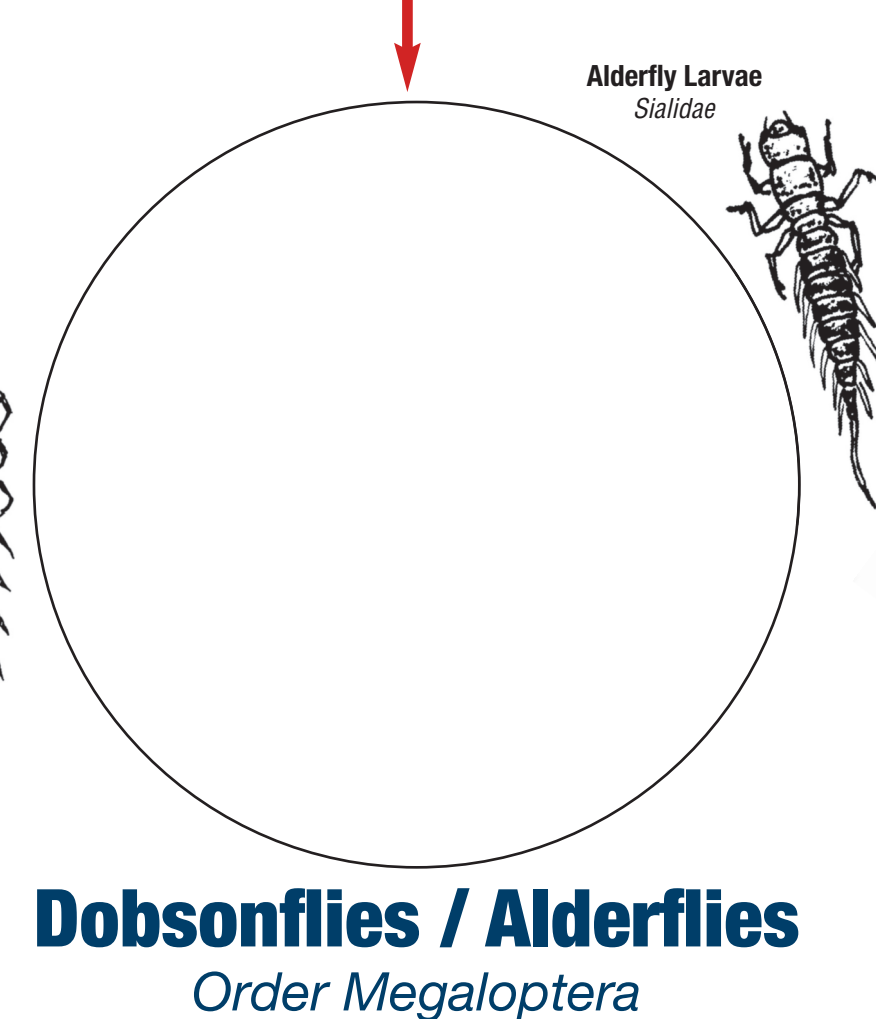
No Identify using image key below.



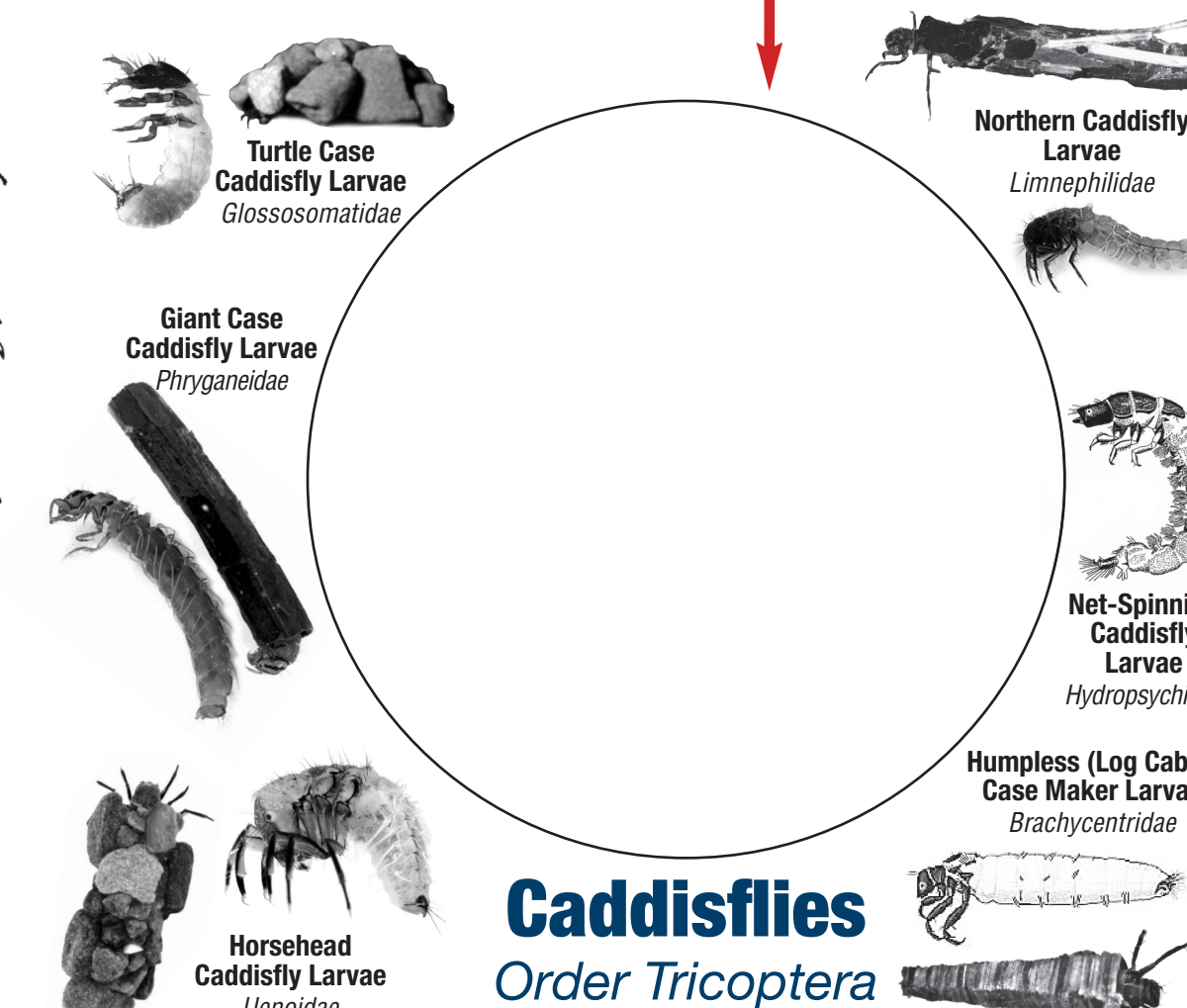
Water Beetles
Order Coleoptera



Dragonflies / Damselflies
Order Odonata



Dobsonflies / Alderflies
Order Megaloptera



Caddisflies
Order Tricotera