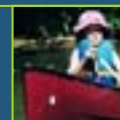
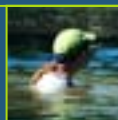


# ROCKINGHAM COUNTY RIVERS GUIDE



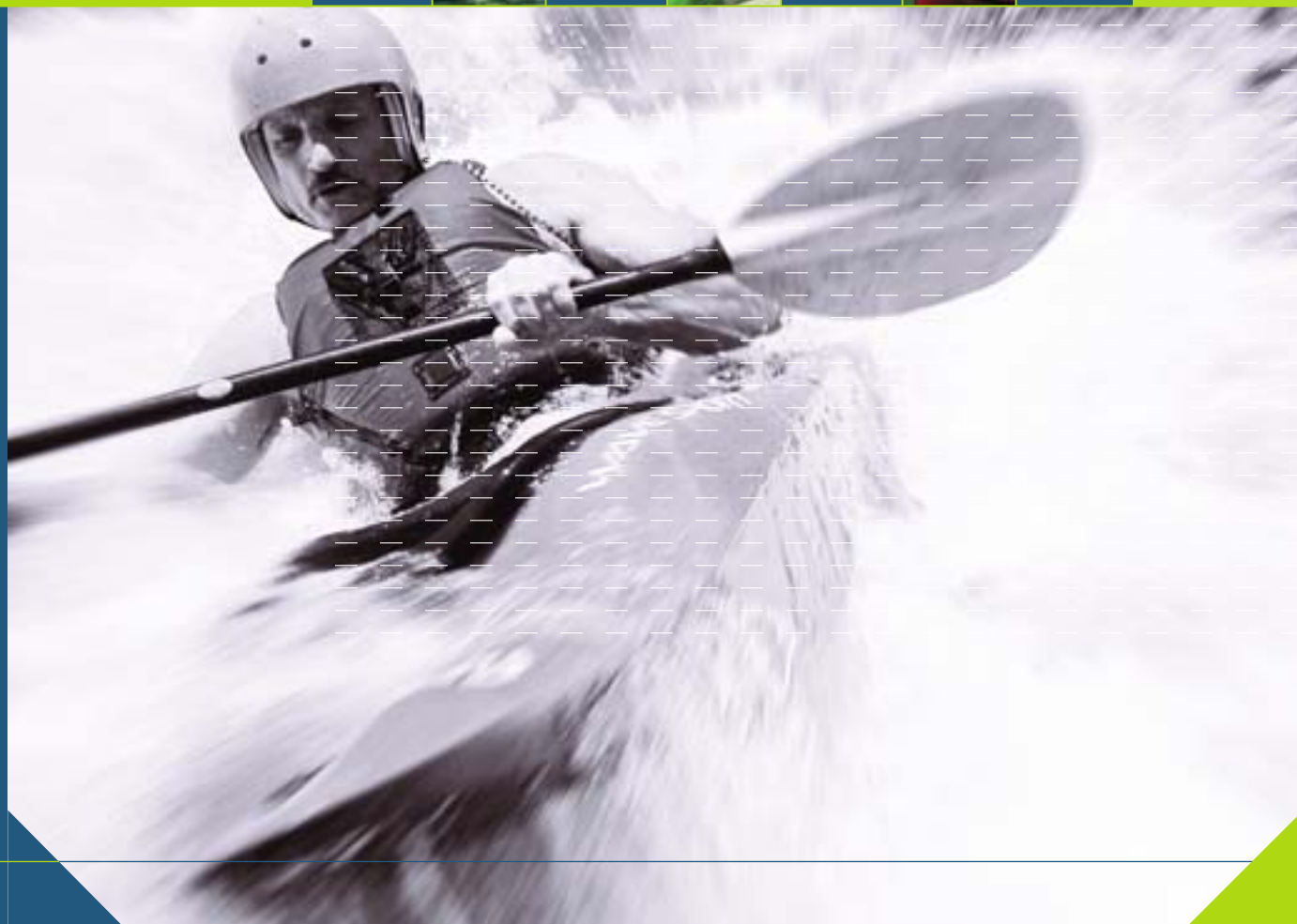
## You're Invited!

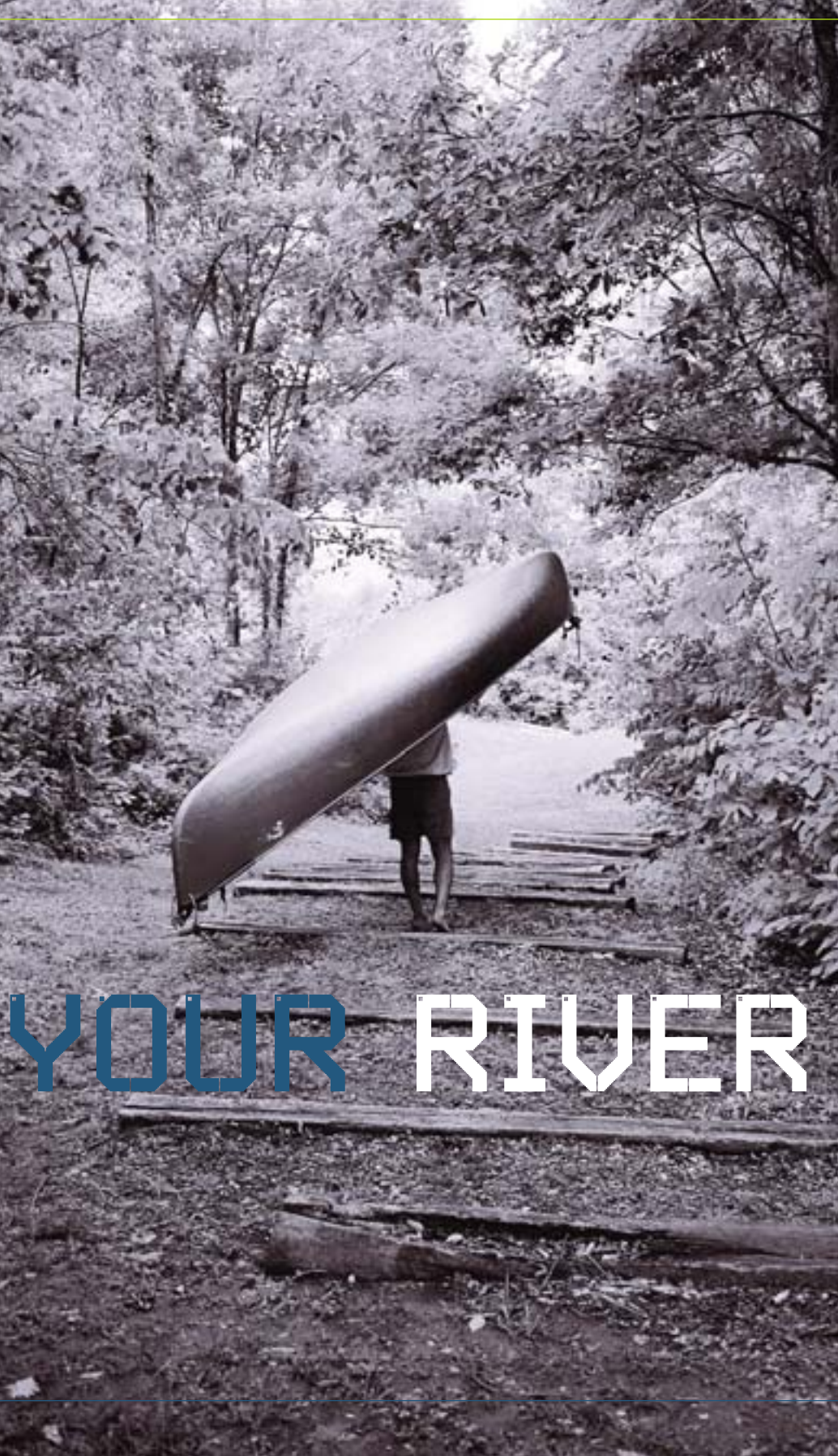
For rental/outfitter information,  
please call the Rockingham  
County

Tourism Development Authority:

**800-316-ROCK.**

All river experiences are  
at your own risk. Any form  
of river recreation is  
dangerous when rivers  
are at flood stage.





YOUR RIVER

ADVENTURE

Welcome to Rockingham County's river country, the perfect getaway for a rendezvous with nature. Our Mayo and Dan Rivers offer recreational paddling for all skill levels. You can create your own adventure, whether it be a leisurely float trip or a thrill-seeking excursion across rapids. The Mayo and the Dan each offer a true encounter with nature. Every river excursion is complete with varied scenery, including lush vegetation and wildflowers, abundant wildlife and even unique historical structures.

With a number of access points and variety of trip durations, you can plan your paddling experience for several days or just a few hours. And Rockingham County offers a range of accommodation choices from bed and breakfast inns to hotels and motels to campgrounds. Whether it's canoeing, kayaking or tubing, Rockingham County's river country offers an outdoor adventure for everyone. So, pack a picnic and bring along the whole family.



# ROCKINGHAM

## 20

# THE DAN

Some might call the Dan the "lazy river." Its pace is leisurely and relaxing, making it well-suited for paddlers of any skill level and fun for the whole family. If a unique adventure filled with history, nature and relaxation is what you're looking for, a paddling trip down the Dan is the perfect fit.

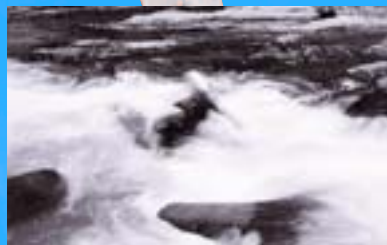
Along the Dan paddlers can see remains of the past, from fossils more than 200 million years old to remaining sites of the Saura Indian tribe. During the 19th century the Dan played an integral role in the development of Rockingham County as bateau crews and small steam launches used its waters for commercial river transportation. The Dan is the only place left in North Carolina where remainders of those bateau systems can still be seen today.

The Dan flows through wide floodplains, high banks and tree-covered corridors and is a local favorite for its pace and historical significance. The portion of the Dan that flows through Rockingham County is 38 miles long and is virtually free flowing with few modern improvements. The Dan's flow is plentiful enough that even in times of drought visitors can still canoe or kayak.





# THE MAYO



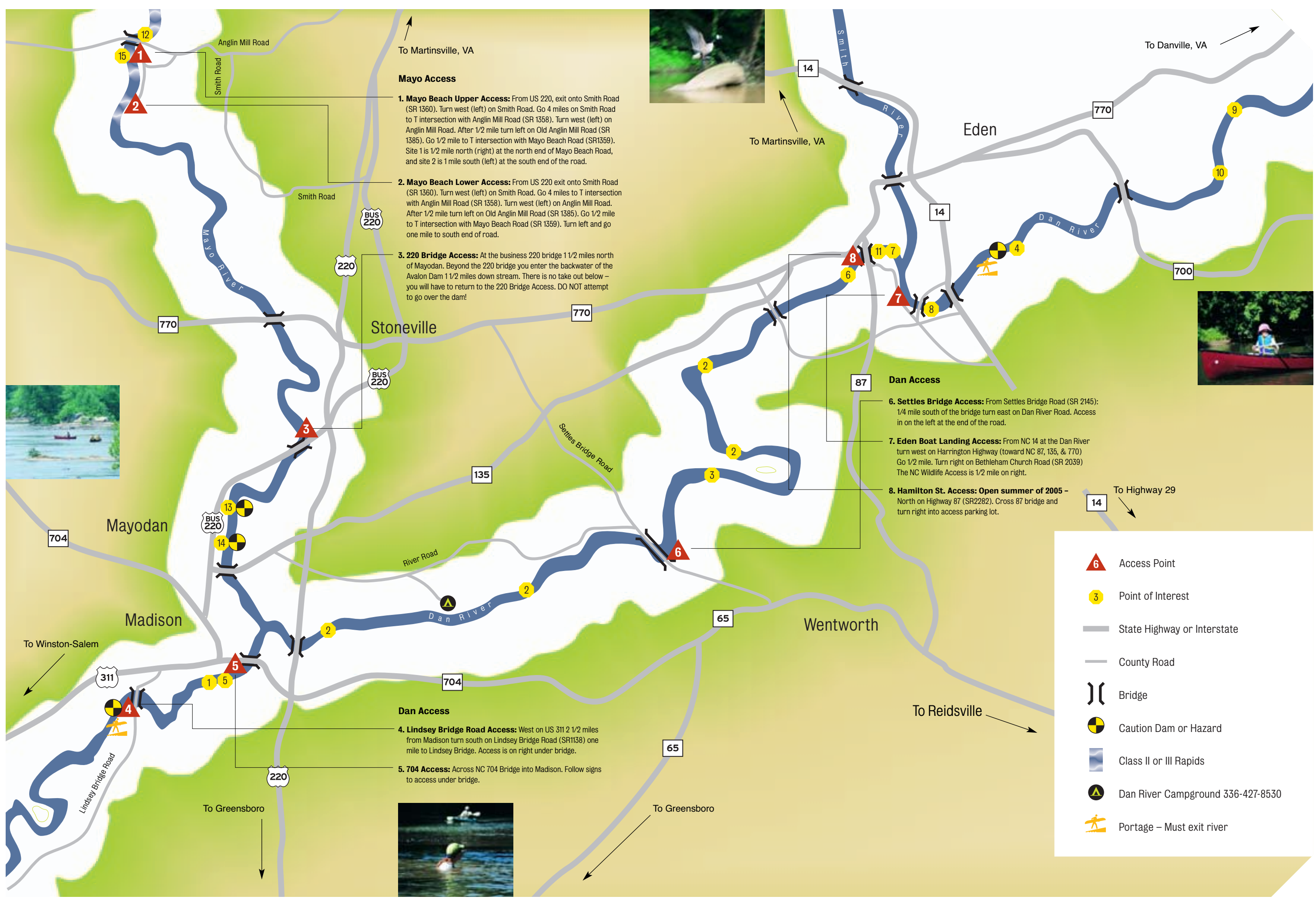
For paddlers looking to conquer rushing rapids, the Mayo is your quest. The journey begins with a number of thrilling rapids in the northernmost portion of the Mayo. Here you'll find the excitement of Class II and III rapids. This portion is recommended for experienced paddlers. After the thrills comes the chance to catch your breath as the next portion of the Mayo smooths out. Beginners and less experienced paddlers may also enjoy this section of the Mayo.

Well-preserved fish traps seen along the Mayo today provide a glimpse into the lives of the Native Americans of yesterday who dwelled nearby. Evidence of the river's significance to industry can still be seen in the early dams used to generate power in Mayodan and at the former town of Avalon. The Mayo flows through a scenic gorge featuring rock bluffs and two natural waterfalls. The river begins near the Virginia border and meanders 16 miles through western Rockingham County until it converges with the Dan.





# YOUR GUIDE



- safety tips
- These tips will ensure a much safer and enjoyable canoeing experience.

1. Wear your life jacket.

2. Take a spare paddle.

3. Don't canoe alone.

4. Have tether ropes on both ends of the canoe.

5. Take insect repellent.

6. Take ample water.

7. Put extra clothing, gear, and food in water-proof bags.

8. Take sunscreen, sunglasses, and wide-brim hat. The sun's reflection off the water can be intense. If it is hot, start early or later in the day and make the trip shorter.

9. Do not attempt to handle wild animals, especially babies.

10. Avoid contact with all livestock.

11. Never canoe flooded rivers.

12. Take rain gear.

13. Take first aid kit.

14. Read maps and plan ahead.

15. Be off the water before dark.

16. Protect your feet with tightfitting wading shoes.

- accommodations (area code is 336.)
- **Eden:**

Days Inn - 623-1500  
Hampton Inn - 627-1111  
Innkeeper Motel - 627-5131  
Jameson Inn - 627-0472  
Mar Gre Motel - 623-9161  
Victoria's Hearth  
Bed & Breakfast - 627-5558

► **Madison, Mayodan, Stoneville:**

Budget Inn - 548-6011  
The Boxley  
Bed & Breakfast - 427-0453

► **Reidsville:**

Budget Inn - 349-6540  
Best Value Inn & Suites - 342-0341  
Comfort Inn - 634-1275  
Days Inn - 342-2800  
Fairview Farm Bed & Breakfast - 349-6910  
Holiday Inn Express - 361-4000  
Royal Inn - 349-9988  
Williams Motel - 349-8457

## plan your adventure

THE DAN	DIFFICULTY	DISTANCE	DURATION
Lindsey Bridge to 704 Bridge	Class I	2.5 miles	1 - 2 hours
704 Bridge to Settles Bridge	Class I	8 miles	3 - 5 hours
Settles Bridge to Hamilton Street	Class I to II	10 miles	4 - 6 hours
Hamilton Street to Eden Boat Landing	Class I	1.5 miles	1 hour
Eden Boat Landing to Danville, VA	Class I	28 miles	14 hours
THE MAYO	DIFFICULTY	DISTANCE	DURATION
Mayo Beach Upper to Mayo Beach Lower	Class II & III	1.5 miles	1 hour
Mayo Beach Lower to 220 Bridge	Class I	8 miles	3 - 5 hours

## points of interest

- DAN RIVER
1. Cape Fear and Yadkin Valley Railroad Bridge (1889)

2. Bateau navigation structure sites

3. Eagle Falls rapid

4. Lower Saura Indian Village site

5. Madison Covered Bridge (1888)

6. Bateau port Leaksville Landing (c. 1820s)

7. Massive stone pier of the Leaksville Covered Bridge (1852)

8. Mebane's Bridge (1924)

9. Triassic conglomerate formations nearly 200 million years old.

10. Shoals and rapids with picturesque names-Widemouth, Beasley's Gallows, Tanyard, and Devil's Jump.

11. Hamilton St. bridge
- MAYO RIVER
12. Native American rock fish trap, clearly visible from the bridge.

13. Avalon Dam

14. Washington Mills Dam

15. "Boiling Hole"

caution

Dams pose a significant danger. Always use caution around the dams and avoid running over the dams. To spot a dam look for a shallow line in the water that reaches from one side of the river to the other, as seen in the picture above. Also avoid fallen trees and other debris.